

Jurong Port Pte Ltd  
37 Jurong Port Road  
Singapore 619110

telephone: (65) 6265 0666  
facsimile: (65) 6265 6614  
web site: www.jp.com.sg

No. 25 of 2016

Date: 27 April 2016

Attn: Cement Consignees

Dear Sirs,

**RE: Notice of T1 Upgrading Schedule**

1. Following our meeting with the cement consignee representatives on 19 April 2016, this is to inform you of the upgrading schedule as per Appendix 1. The slides deck with the full details are as Appendix 2.
2. Please factor these dates in your planning/scheduling to minimize shipments as far as possible during the affected dates.
3. The CUCF will continue to be available during this period and the usual CUCF tariff will still apply.
4. Please contact our Bulk Cargo personnel should you need further assistance:

Sivakumar (AVP, Operations)	Tel : (65) 6413-9508
Stanley Tham (Mgr, Bulk Cargo)	Tel : (65) 6660-9097
Bernard Foo (SM, Commercial)	Tel: (65) 6413-9548

Yours faithfully,

Bernard Foo  
Senior Manager, Commercial (Bulk)  
For Jurong Port Pte Ltd

For updates on safety-related news and information, please visit [www.wshc.sg](http://www.wshc.sg)

**Appendix 1:**

**Construction Shutdowns**

S/N	Start	End	Duration (Days)
1 <sup>st</sup>	16 Jul 2016	30 Jul 2016	15
2 <sup>nd</sup>	16 Sep 2016	30 Sep 2016	15
3 <sup>rd</sup>	6 Feb 2017	22 Feb 2017	15
4 <sup>th</sup>	10 Apr 2017	24 Apr 2017	15
5 <sup>th</sup>	12 Jun 2017	26 Jun 2017	15
6 <sup>th</sup>	2 Sep 2017	17 Sep 2017	15

For updates on safety-related news and information, please visit [www.wshc.sg](http://www.wshc.sg)

For updates on safety-related news and information, please visit [www.wshc.sg](http://www.wshc.sg)



# T<sub>1</sub> Upgrades



# Content

1. T1 Shutdowns
2. Details Work Scopes



# 1. Shutdowns- Construction

## Construction Shutdowns

S/N	Start	End	Duration (Days)
1 <sup>st</sup>	16 Jul 2016	30 Jul 2016	15
2 <sup>nd</sup>	16 Sep 2016	30 Sep 2016	15
3 <sup>rd</sup>	6 Feb 2017	22 Feb 2017	15
4 <sup>th</sup>	10 Apr 2017	24 Apr 2017	15
5 <sup>th</sup>	12 Jun 2017	26 Jun 2017	15
6 <sup>th</sup>	2 Sep 2017	17 Sep 2017	15



# 1. Shutdowns- Construction

## **1<sup>st</sup> Shutdown (16/7 – 30/7)**

- Demolish and erection of conveyor trestle & cable tray
- Relocation of existing UL power cables.

## **2<sup>nd</sup> Shutdown (16/9 – 30/9)**

- Belt conveyor modification/ erection
- UL electrical modification

## **3<sup>rd</sup> Shutdown (6/2 – 22/2)**

- PHS tie in
- SCADA tie in

## **Ad hoc UL Shutdown (not affecting operation)**

- Discharge chute modification
- Anti-collision modification

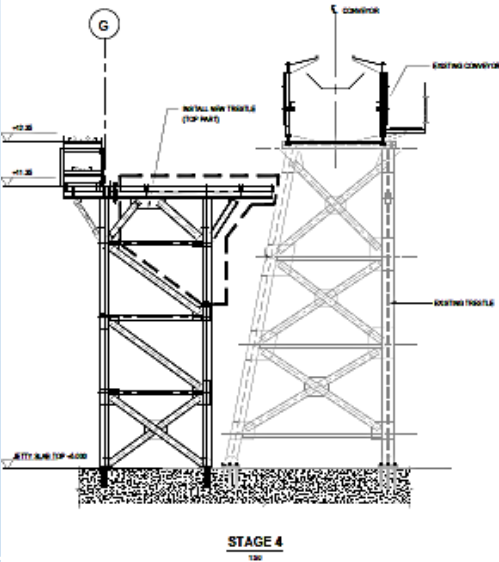
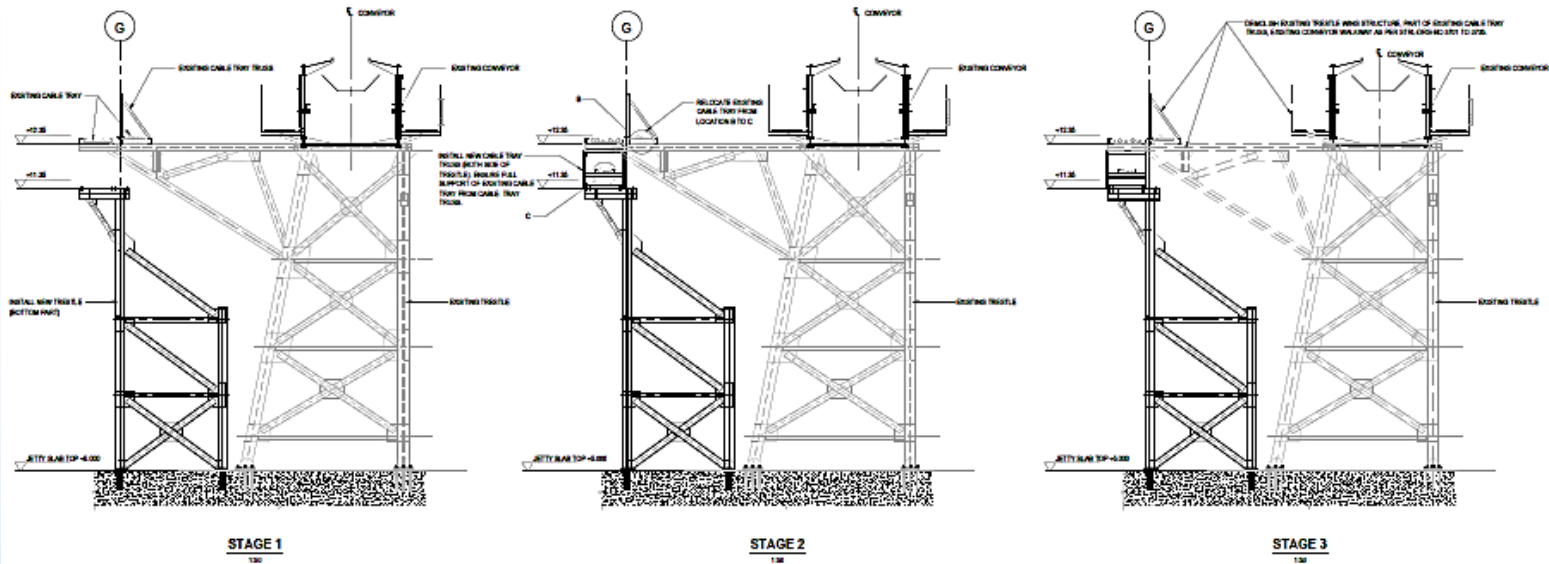


# 1. Shutdowns– Existing System Upgrades

S/N	Description	Duration	Tentative dates
1	P2 Substation Shutdowns- replacement of transformers.  * Whole T1 will be down*	<2 days	Oct 2016
2	UL Refurbishments (UL P1, P2, & P3)  * Not affecting berth operation.	6 ~ 8 weeks for each UL	Jan 2017 onwards, TBC



## 2. Work Scopes- 1<sup>st</sup> Shutdown



Wharf side belt conveyor new trestle modification, erection, and cable relocation

Stage1: erect new trestles (~ 1.6 – 4.5 tons each)

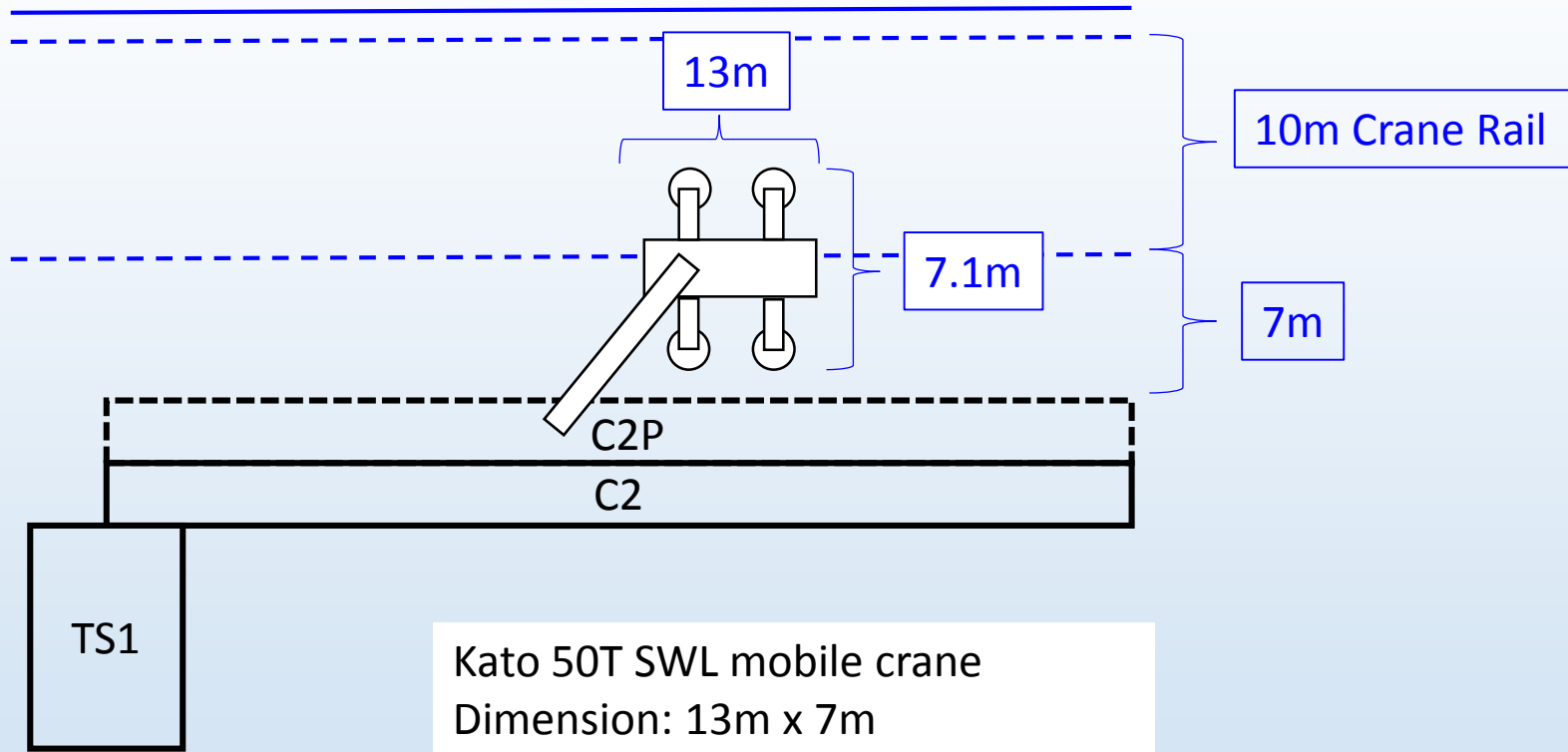
Stage 2: relocate UL cable onto temporary cable trays

Stage 3: dismantle existing structures

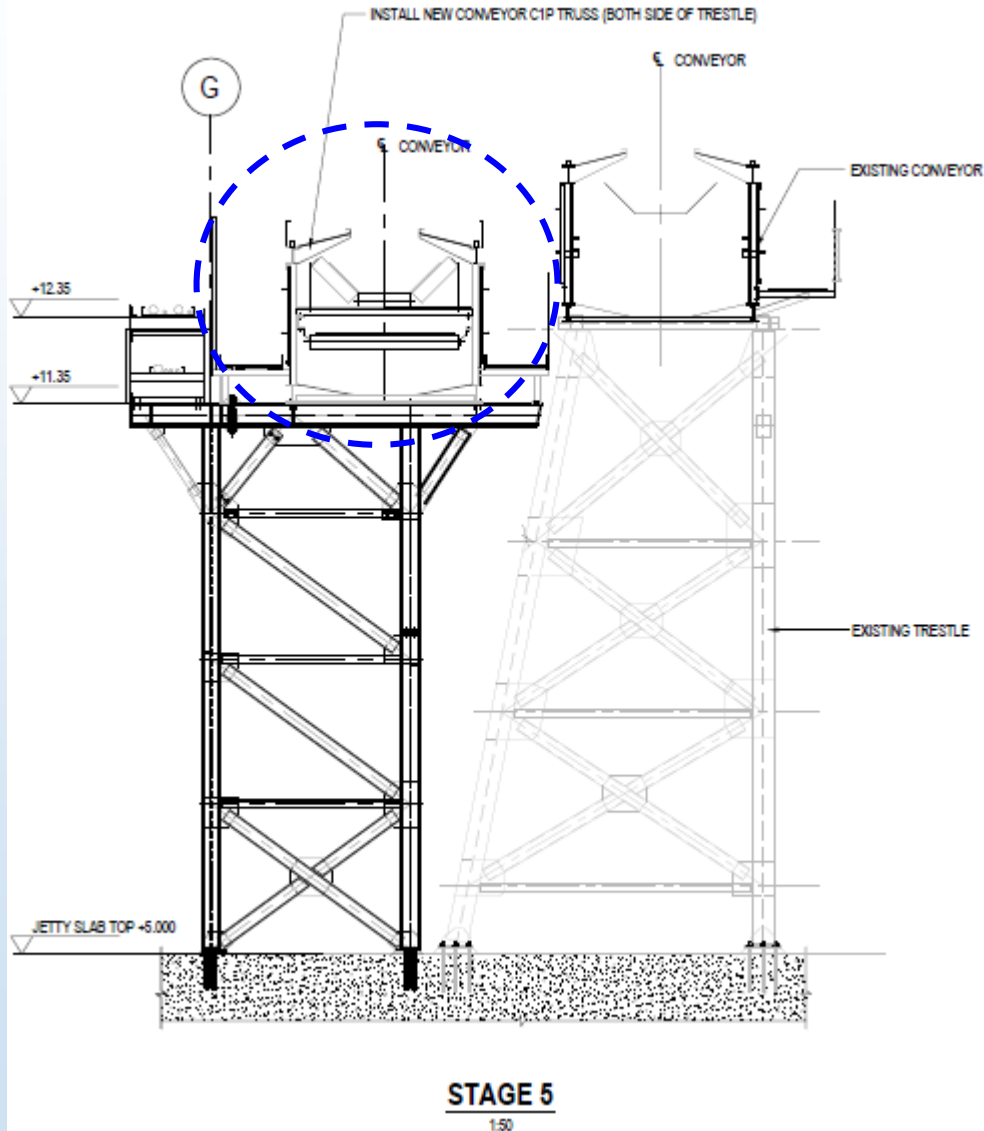
Stage 4: erect remaining trestles and relocate UL cable onto new cable trays



## 2. Work Scopes- 1<sup>st</sup> Shutdown



## 2. Work Scopes- 2<sup>nd</sup> shutdown



Erection of belt conveyor enclosure erection- 16m modules (~ 4 - 9.6 tons each)

Modification to existing Belt Lifter Trolley- remove from belt conveyor, refurbish, and reinstall on new conveyor.

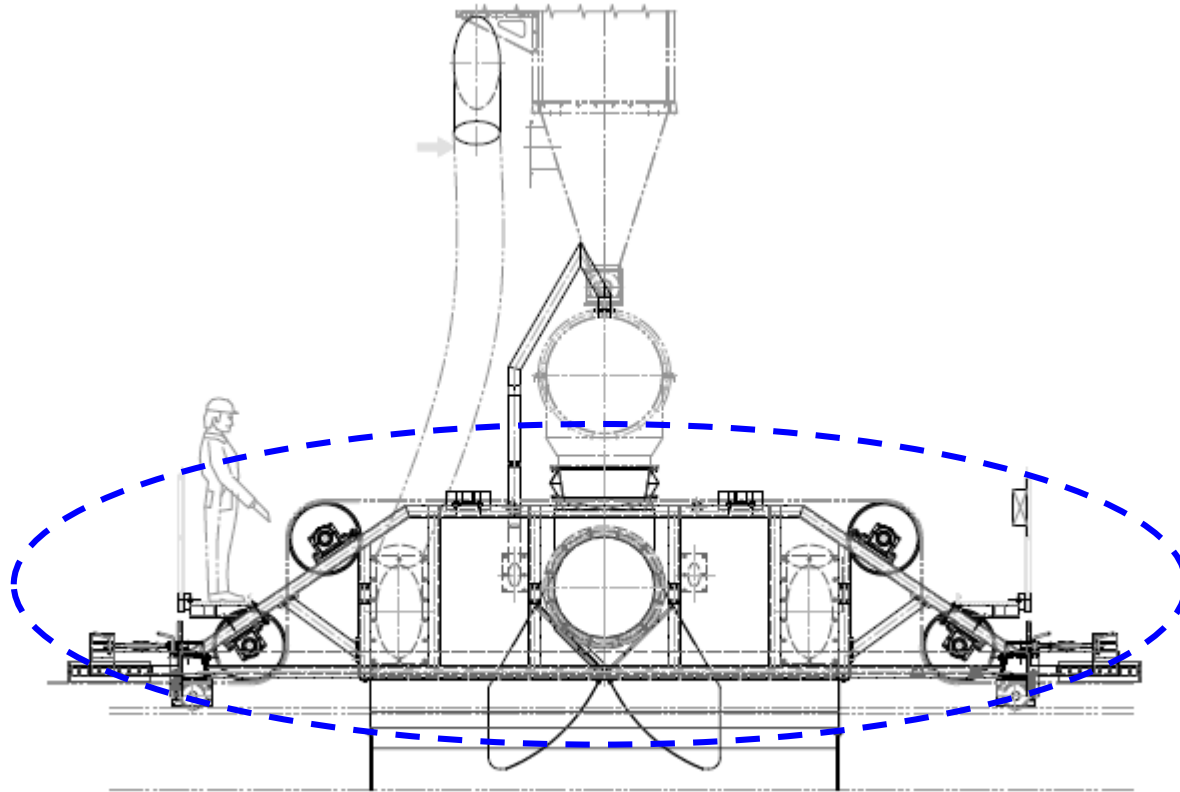


## 2. Work Scopes- 2<sup>nd</sup> shutdown

JS Metal Pte Ltd			Prepared: Then	
Project Code: J275			Date: 19/1/16	
Summary Material List				
No.:	Item	Weight (kg)	Total Length/ No.	Total Weight (kg)
1	Trestle (C1P Qty: 8 nos & C2P Qty: 7 nos)	23,944	-	23,944
2	Special Trestle (C1P Qty:1 no & C2P Qty:1 no)	4,458	-	4,458
3	Cable Tray Truss 16m (Typical) C1P	1,850	151.4 m	17,505
4	Cable Tray Truss 16m (Typical) C2P	1,850	187.4 m	21,668
5	Conveyor Truss 16m (C1P Qty:8 & C2P Qty:10)	9,656	18 nos	173,808
6	Conveyor Truss 12m & 11.5m (C1P Qty:1 & C2P Qty:2)	7,466	3 nos	22,399
7	Conveyor Truss 8m & 7.5m (C1P Qty:2 )	4,938	2 nos	9,877
8	Conveyor Truss 7.75m (C1P Qty:1 & C2P Qty:1)	3,964	2 nos	7,928
9	Take-up Tower C1P	3,598	1 nos	3,598
10	Take-up Tower C2P	3,637	1 nos	3,637
11	Steel Structure			TBC
12	Pipe Rack Support Structure			TBC
13	300mm HD Vehicular Grating			TBC
				288,821



## 2. Work Scopes- 2<sup>nd</sup> shutdown

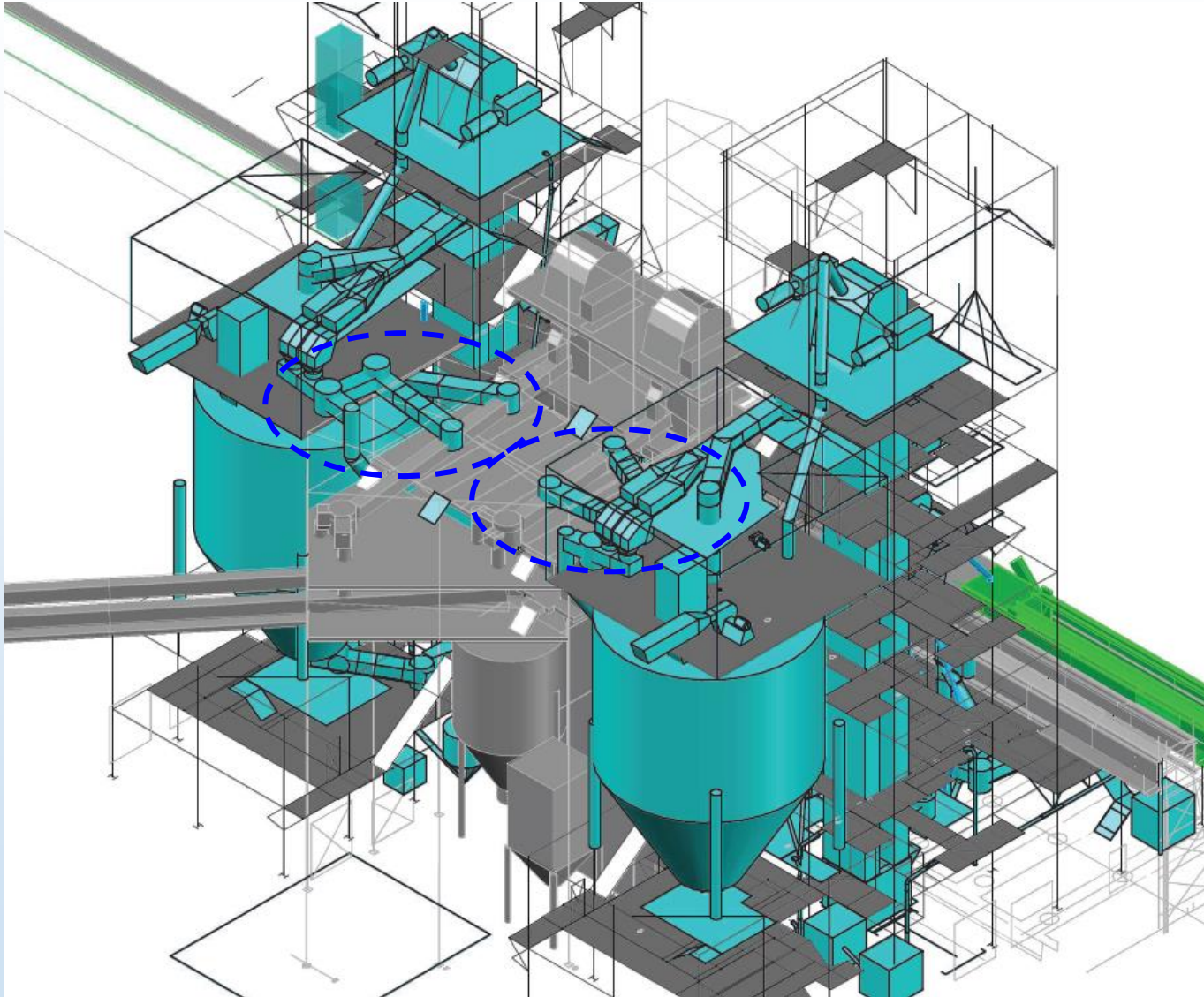


Modification to existing Belt Lifter Trolley- remove from belt conveyor, refurbish, and reinstall on new conveyor.

Belt Lifter UL P3 (4 tons).



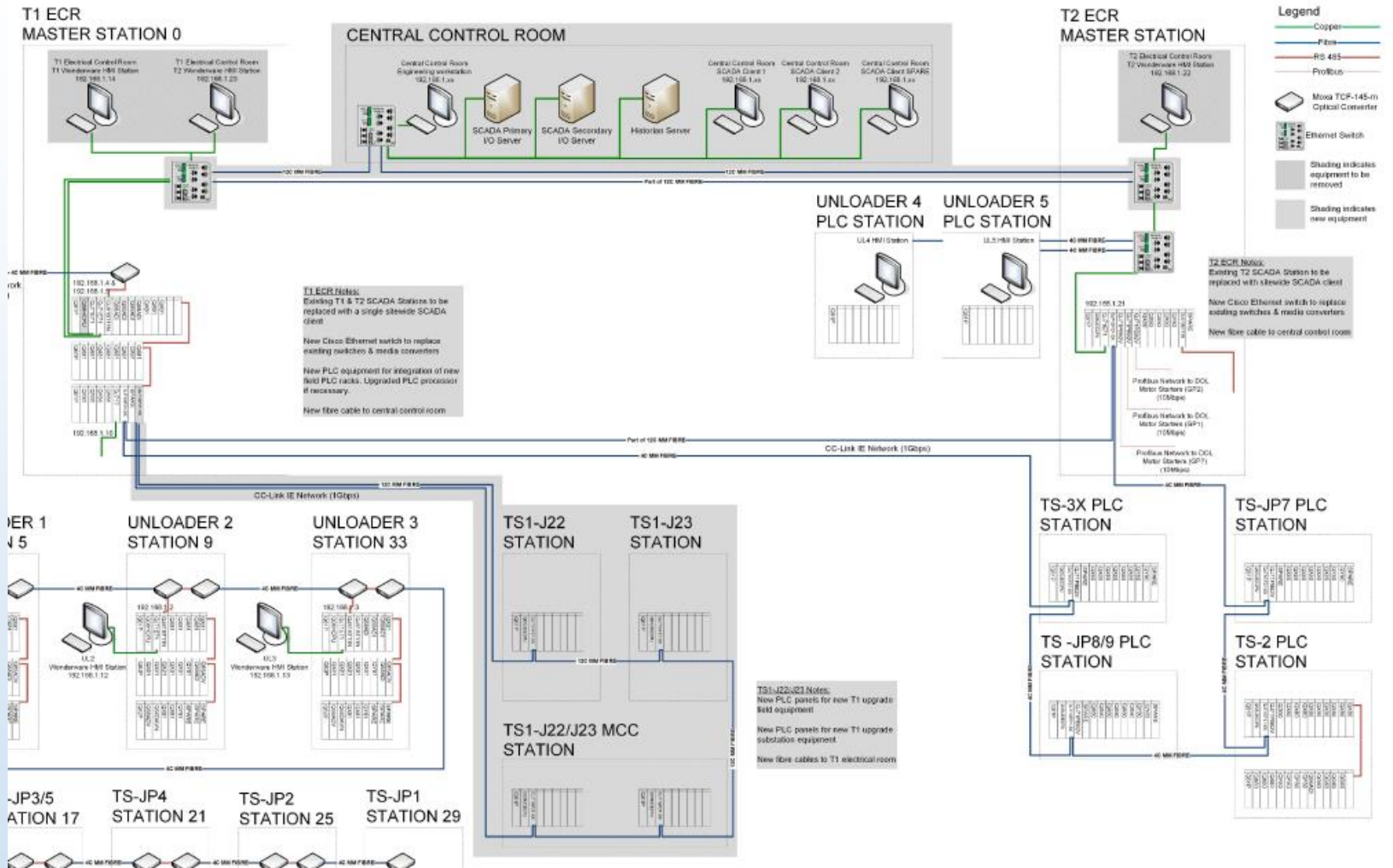
## 2. Work Scopes- 3<sup>rd</sup> Shutdown



Upper level PHS equipment tie in: airslides, flow splitter, calibration tank, diverter gates, dust collectors, etc...



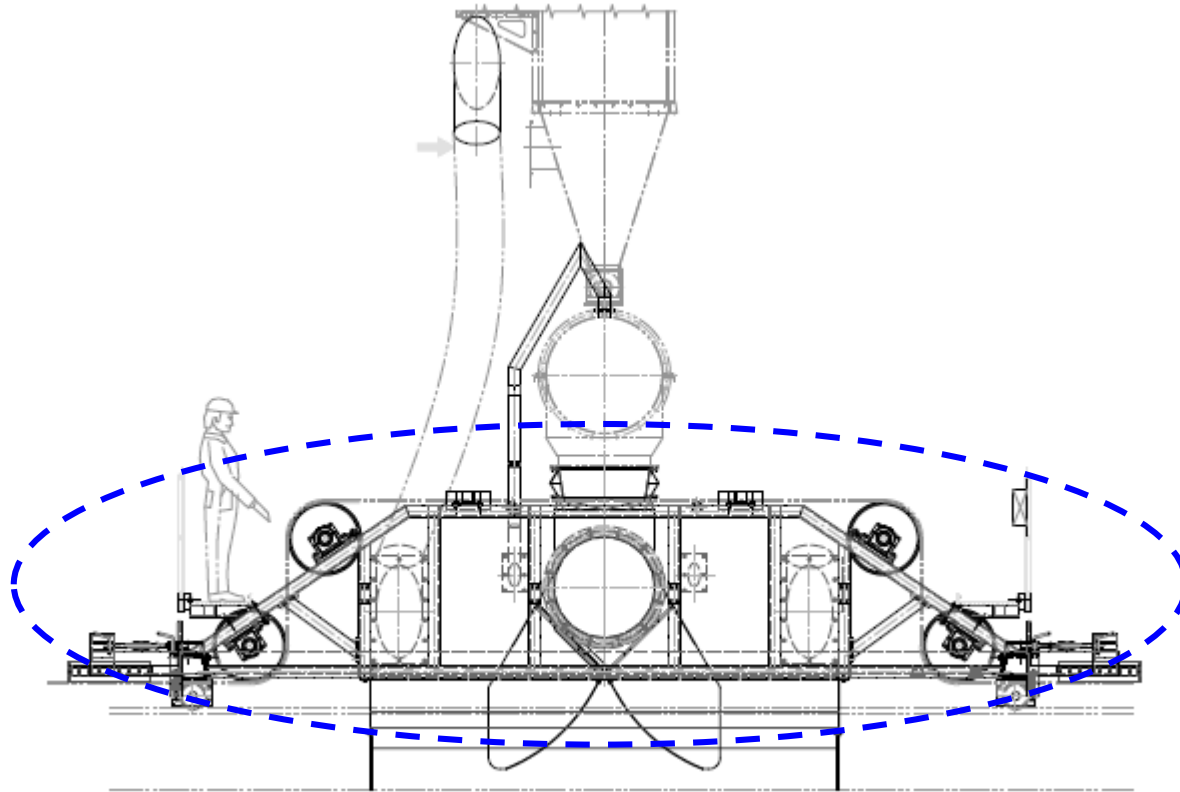
# 2. Work Scopes- 3<sup>rd</sup> Shutdown



PLC and SCADA system tie in:  
 PHS Systems, SCADA Integration, Electrical Switchgear Connection, VSD  
 Commissioning, Fire Safety Devices Testing, CCTV Testing, etc...



## 2. Work Scopes- 3<sup>rd</sup> Shutdown



Modification to existing Belt Lifter Trolley- remove from belt conveyor, refurbish, and reinstall on new conveyor.

Belt Lifter UL P2 (4 tons).



*Thank You*

