

No. 26 of 2009

15 September 2009

Dear Port Users

## FLOATING CRANE OR TANDEM LIFTING OPERATIONS

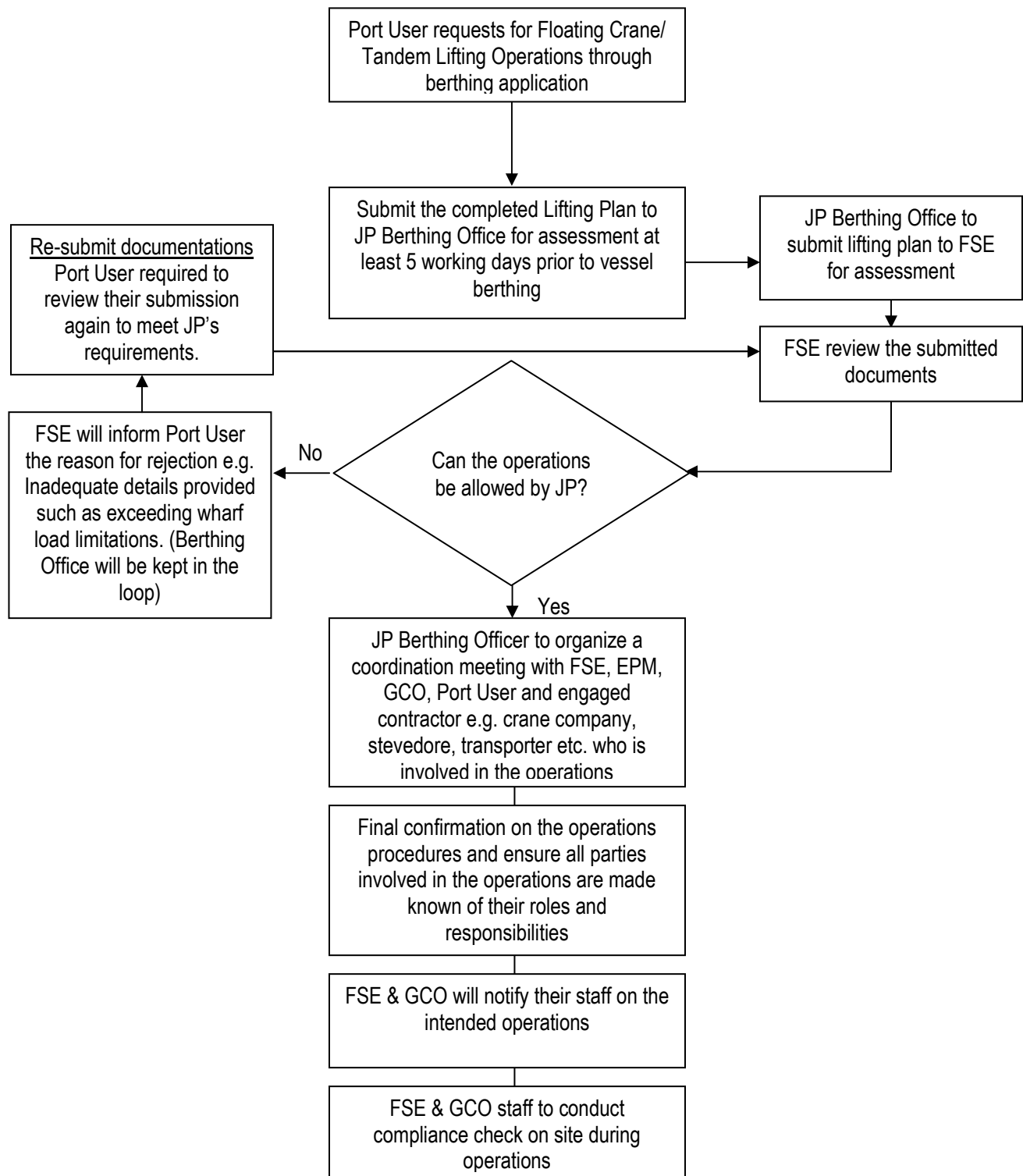
- 1 This circular is to inform you of the existing procedure for Floating Crane/Tandem Lifting Operations at Jurong Port. Please refer to the attached Flowchart for the approval process which is also available on JP Online Log-in page.
- 2 This procedure is to ensure that lifting operations involving Floating Crane or Tandem Lifting is carried out in a safe manner.
- 3 A Lifting Plan supported by the Risk Assessment must be developed prior to the commencement of the lifting operations. Port users are required to complete and submit the Lifting Plan to **Jurong Port Berthing Office** ([jpberthing@jp.com.sg](mailto:jpberthing@jp.com.sg)) for lifting operations that are carried out at the berths, and to **Jurong Port Fire Safety Environment** (FSE) Department ([jpfss@jp.com.sg](mailto:jpfss@jp.com.sg)) for lifting operations that are carried out at the open yards, at least 5 working days prior to vessel arrival or lifting operations respectively.
- 4 The Workplace Safety Health Council (WSHC) Technical Advisory Panel for Safe Operation of Lifting Equipment requires a Lifting Plan to include the following minimum requirements:
  - (a) The personnel required;
  - (b) The personnel's roles, responsibilities and competencies;
  - (c) Nature and weight of load;
  - (d) Type and location of lifting points;
  - (e) Selection of appropriate lifting gears and equipment;
  - (f) Assessment of the need for tagline to control movement of suspended load;
  - (g) Means of communication during lifting operations
  - (h) Land Transportation Plan (as required)
  - (i) Factors detrimental to the lifting operations such as adverse weather and poor illumination;
- 5 The Lifting Plan must be communicated to the lifting team before starting the lifting operations
- 6 The "Declaration and Assessment of Tandem Lifting/Floating Crane Operations" Form can be downloaded from JP Online/Forms Download/Safety Related/Lifting Plan.
- 7 JP may also call for a coordination meeting with relevant parties, if necessary, prior to the actual operations to discuss and clarify on the intended operations.
- 8 If you need further clarifications, please contact:
  - I. David Ng at 66609503 or email: [davidng@jp.com.sg](mailto:davidng@jp.com.sg),
  - II. Chan Robert at 66609073 or email: [robertchan@jp.com.sg](mailto:robertchan@jp.com.sg)
  - III. FSE duty officer at 66609552 or email: [jpfss@jp.com.sg](mailto:jpfss@jp.com.sg)

Thank you.

Adrian NG  
Fire, Safety & Environment  
FOR JURONG PORT PTE LTD

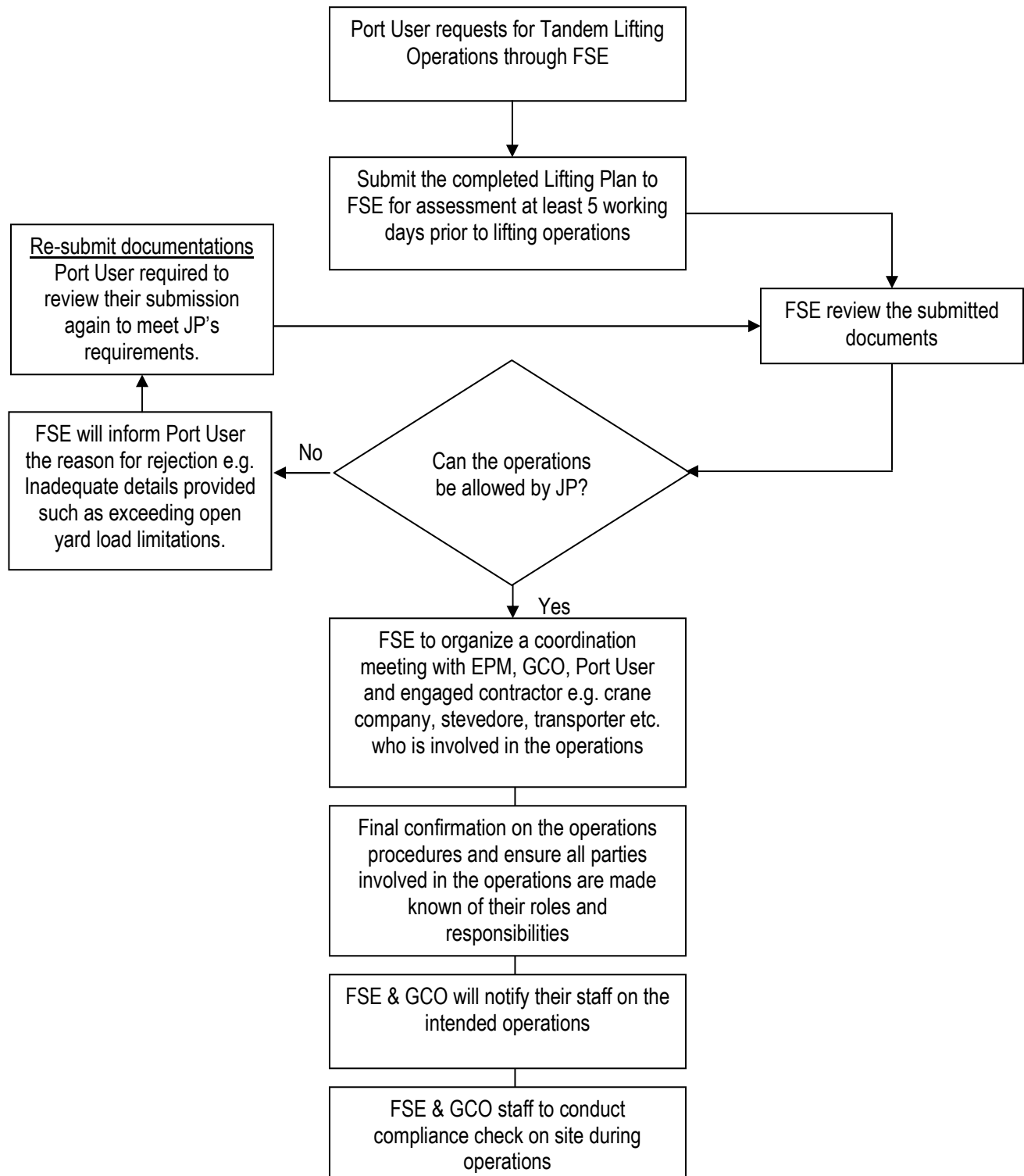


## Approval Process for Floating Crane/ Tandem Lifting Operations (For Berth Operations)



FSE: Fire Safety Environment  
GCO: General Cargo Operations  
EPM: Engineering Property Maintenance

## Approval Process for Tandem Lifting Operations (For Open Yard Operations)



FSE: Fire Safety Environment  
GCO: General Cargo Operations  
EPM: Engineering Property Maintenance