

No.13 Of 2008

Reference No.: JPPL-FSS-SC-27022008-12

29 February 2008

Jurong Port Pte Ltd
37 Jurong Port Road
Singapore 619110

telephone (65) 6265 0666
facsimile (65) 6265 6614
web site www.jp.com.sg
Reg No. 200007468N
GST Reg No. 20-0007468N

To: See Distribution List

SAFETY GUIDELINES ON INSTALLATION OF GANGWAY

1 In our continuing efforts to ensure safe operations within Jurong Port, we have established the following safety guidelines for the installation of gangway.

2 Guidelines

- 2.1 Gangways are to be properly and steadfastly secured on both ends (i.e. wharf and barge/vessel's ends)
- 2.2 Gangways are to be wrapped/installed with safety netting throughout the length and/or Safe-all net installed right underneath the gangway to prevent workers from falling into the sea. Netting should cover both ends of the gangway especially at point of access and egress.
- 2.3 The safety and safe-all nets are to be free from defects and of good and sound construction that are able to hold/withstand human load.
- 2.4 Hand/guard rails of good and sound construction are to be installed throughout the length of gangway.
- 2.5 Guard Rails (Refer to attached illustration.)
 - 2.5.1 Uppermost guard rail ≥ 1.0 metre above walkway platform
 - 2.5.2 Gap between 2 guard rails < 600 mm

3 Please refer to the following pictures for examples of incorrect installation and securement of the gangway.

4. We seek your full co-operation in conforming to the guidelines.

Thank You.



Ng Kok Wee
FIRE & SAFETY DEPARTMENT
JURONG PORT PTE LTD
TEL:62650666
FAX 62656614

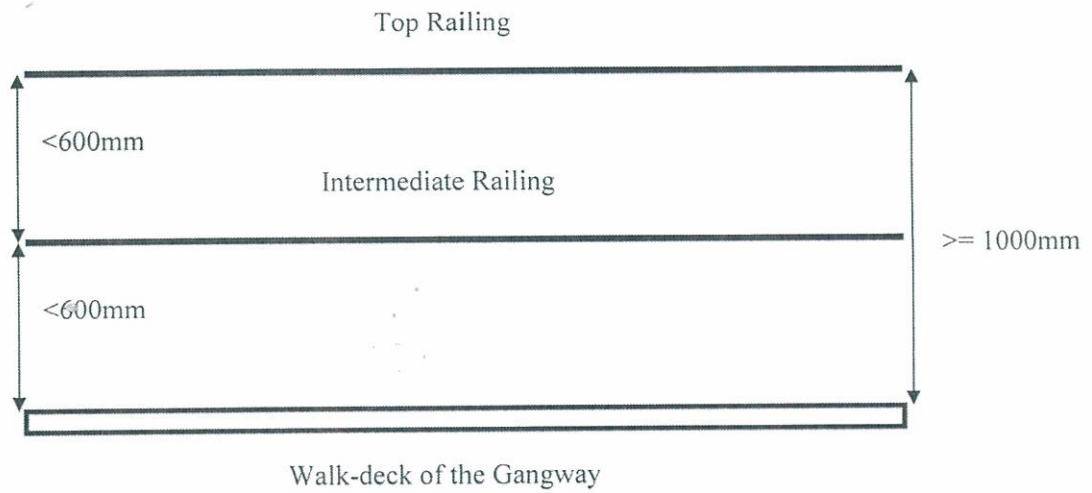
c.c. – GBO / FSS



Guard Rails

- a) Uppermost guard rail ≥ 1.0 metre above walkway platform
- b) Gap between 2 guard rails $< 600\text{mm}$

SIDE VIEW OF GANGWAY



Sub-Standards



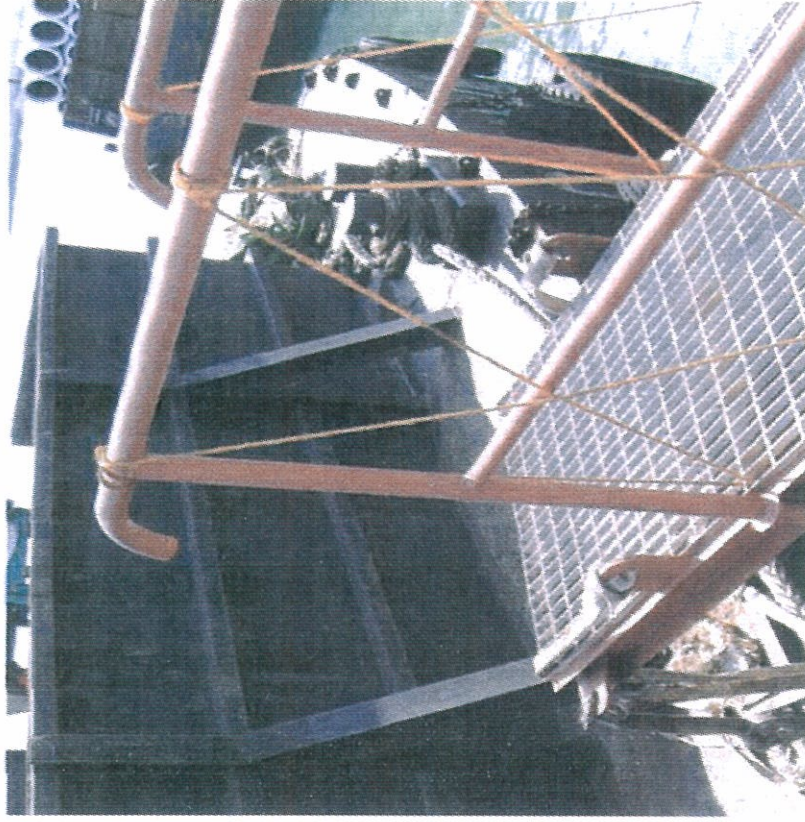
Gangway not properly secured.

Netting not properly installed.

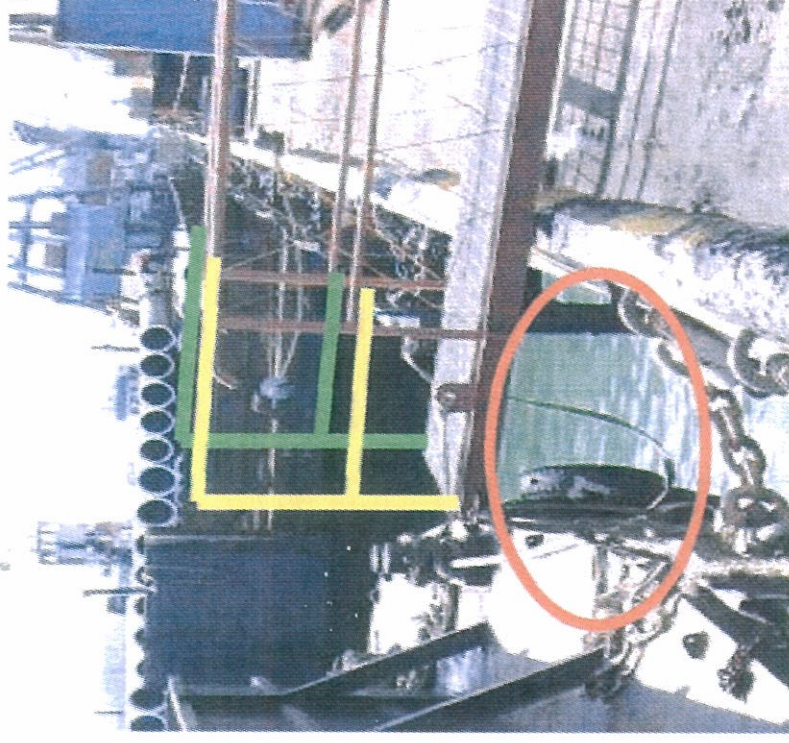


Sub-standard netting.

Sub-Standards



Handrail should be installed on the entire length of the gangway.



No safety netting provided under gangway.

No step-down platform.

Sub-Standards



No step down platform for access and egress.



Gangway not extended fully to barge; improperly installed.